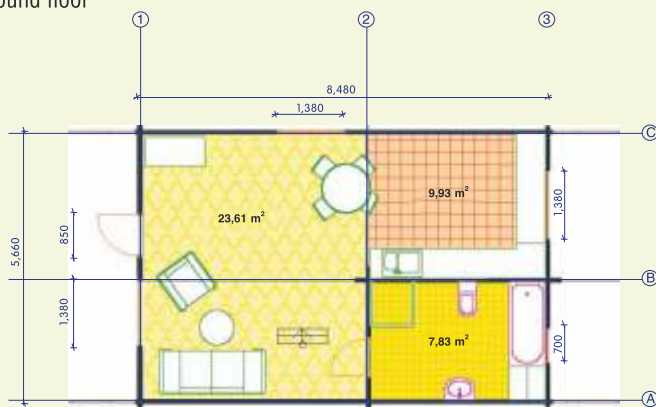


JD 95 m² FROM £79000

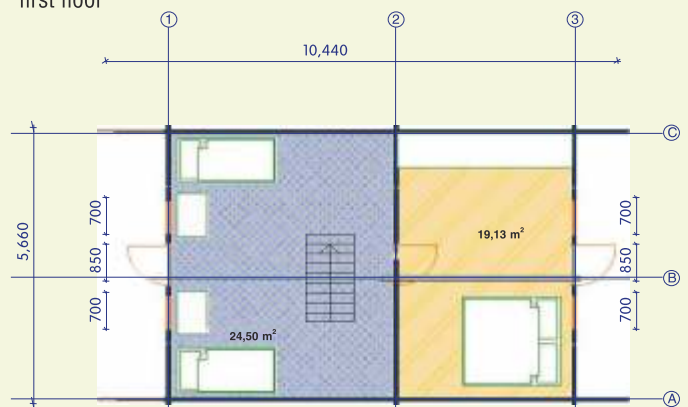
Log Cabins



ground floor

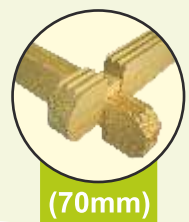
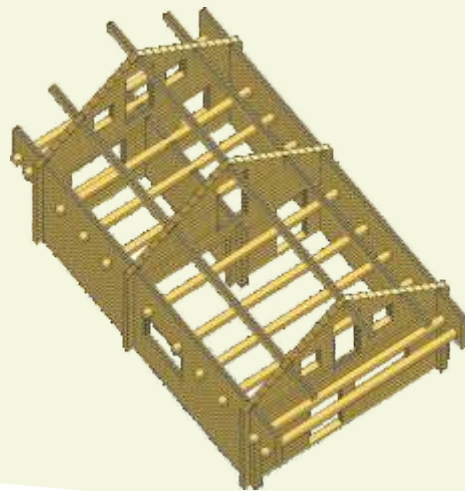


first floor



Two Storey Log Cabin 95 m²
6 x 9 m (5,85 x 8,75) - **IE10068030**

- Wall thickness 70 mm T&G;
- Roof cover -external - plywood, internal planed boards;
- Floors - 26 mm thickness;
- The corbel of the roof around the whole house;
- Double Glazed windows and door;
- Roof area - 110 sq.m;
- Stairs included;
- Double roof construction (for insulation, wich is extra);
- Windows can be switched for ventilation.



(70mm)



Log Cabins

Ipswich 5x5
studio with bathroom



FROM £10999



(45mm)

Log Cabins

Essex 28m²
1 bed, 1 bathroom
FROM £15500



(45mm)

Log Cabins

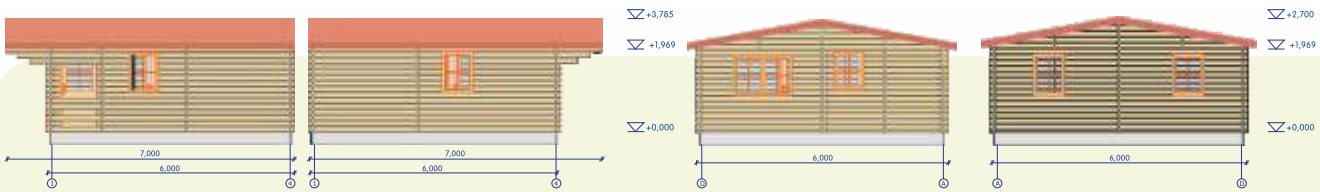
Glasgow 5x4
FROM £9999



Partition for toilet,
ideal play area for children



(45mm)



double glazed windows and door

FROM £21500

Lodge 6x6

6 x 6 (5,823 x 5,823) - IE10080040

Basement size is shown in brackets

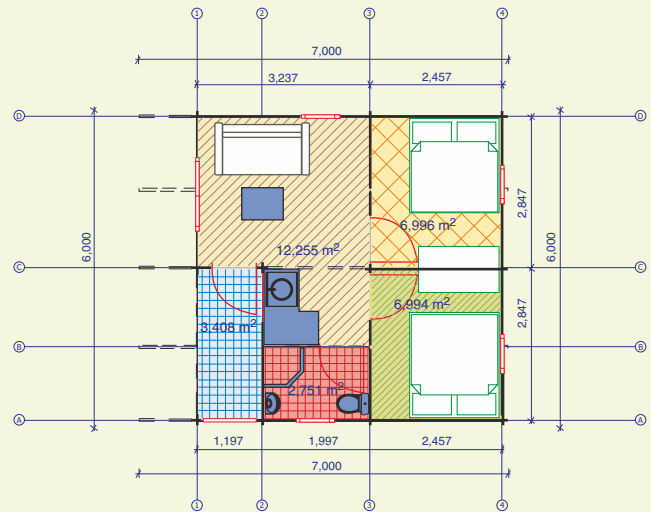
Fay with double roof construction - IE10080041

- Wall thickness 45 mm T&G;
- Double grooved interlock;
- Wall boards are flat faced with softly rounded edges;
- The corbel of the roof around the whole house;
- Large canopy - 1 m;
- Veranda with canopy 1,9 m;
- Double Glazed windows and doors;
- The doors and windows can be supplied either left, or right-hand;
- The cabin includes the roof and floor;
- Windows can be switched for ventilation.

Living area 29 m²

2 Bedrooms, WC/Bath. Kitchen, hall.

Double roof supplied as optional extras.



(45mm)

Europa

- log cabin 6,8 x 6,8m;
- wall logs 70mm;
- 5 rooms;
- veranda.

FROM. £28999



Log Cabins



(70mm)

Modular Housing



FROM £32600



Log Cabins

BJ

180m²

- Timber house 9,0 x 10,0m;
- wall thickness 165 mm;
- log cabin 5,0 x 6,0m;
- 6 rooms;
- double glazed windows and doors.



Log Cabins



(165mm)

FROM £79000



Norfolk 11x6

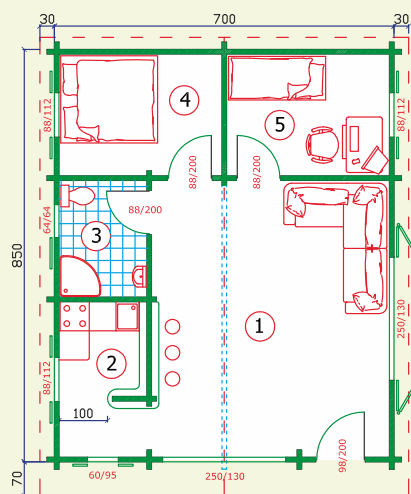
- Living area 51,25m²
- 3 bedroom cabin;
- living room;
- kitchen area;
- bathroom;
- could be easily converted into 4 bedrooms. **FROM £47000**



(45mm)

Mylene

- log cabin 7,0 x 8,5m;
- wall logs 70mm;
- 5 rooms;
- double glazed windows and doors.



FROM £35000



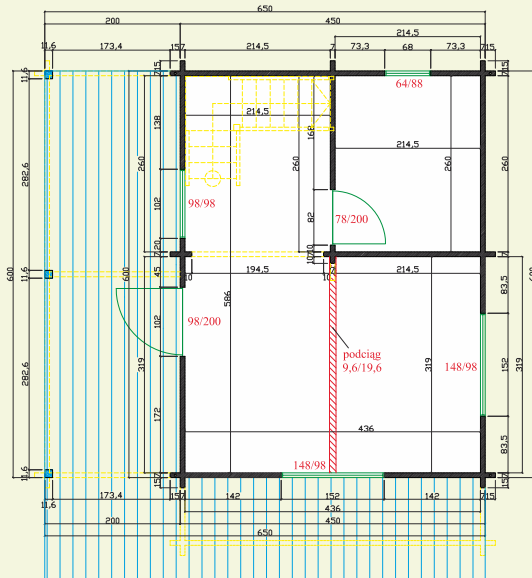
(70mm)

Edinburgh

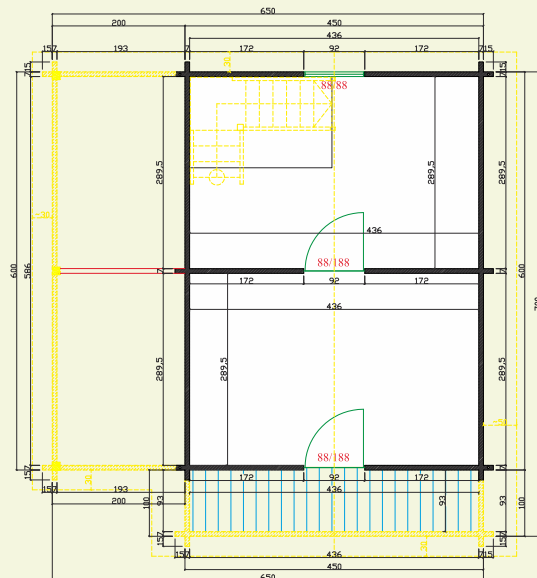
Log Cabins



ground floor



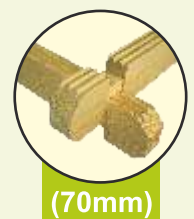
first floor



FROM £47000

55m²

- log cabin 4,5 x 6,0m;
- wall logs 70mm;
- 4 rooms;
- double glazed windows and doors;
- balcony;
- large decking area.



(70mm)

Extention

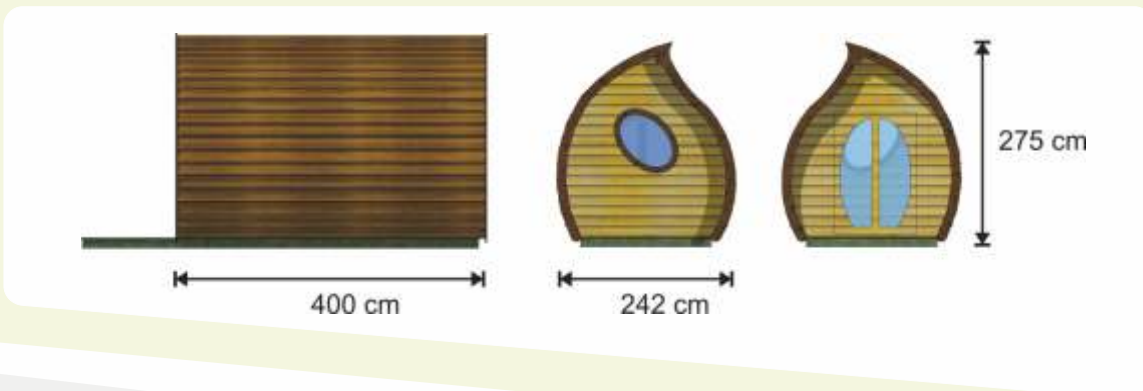
- extra room and WC
- any size;
- roof insulated;
- double glazed;
- doors and windows;



(45mm)

Leaf

- Timber house 2,42 x 4,00 m;



Life

Log Cabins

- log cabin 7x 6m + 2m veranda;
- 2 beds;
- living room;
- and kitchen area;
- bath.

FROM £28000



(70mm)

Garage

FROM £9250





Lodge



For more information please contact:


www.timbercabins-fencing.uk

Bypass Nurseries
London Rd, Capel St. Mary
Ipswich, IP9 2JR

tel.: 07908 106316